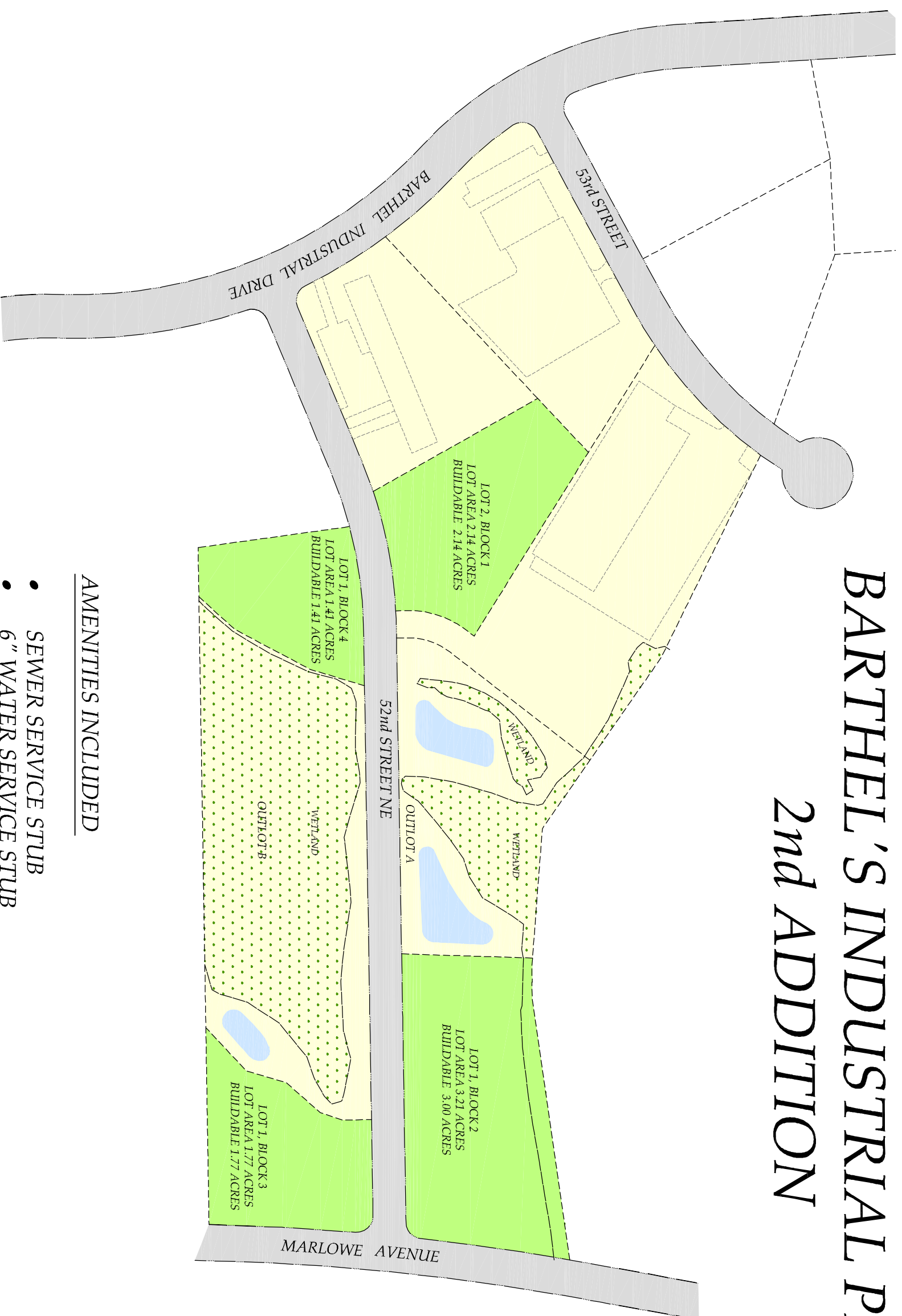


BARTHEL'S INDUSTRIAL PARK 2nd ADDITION



AMENITIES INCLUDED

- SEWER SERVICE STUB
- 6" WATER SERVICE STUB
- FRONTAGE ON 44' WIDE PUBLIC STREET
- REGIONAL STORMWATER PONDS

BOLTON & MENK, INC.
Consulting Engineers & Surveyors
MANKATO, MN FAIRMONT, MN SLEEPY EYE, MN BURNSVILLE, MN
WILLMAR, MN CHASKA, MN RAMSEY, MN AMES, IA

